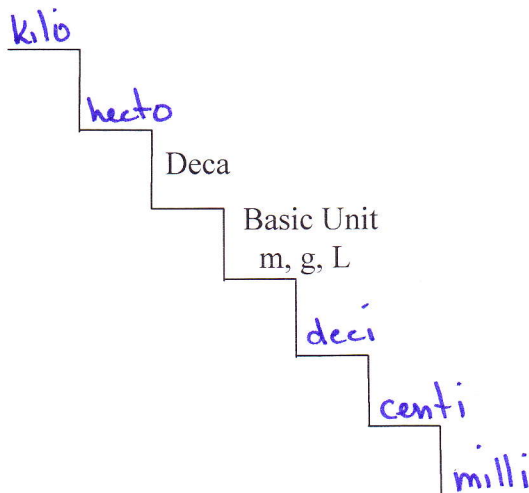


MBF3C Unit 8 Review

1. Fill in the conversion staircase.



2. Use the conversion staircase to convert the measurement on the left to the units on the right:

- a) 50 dam = 500 m b) 10 km = 10 000 m
 c) 1 m = 1000 mm d) 75 mm = 7.5 cm
 e) 1 cm = 0.0001 hm f) 50 cm = 0.5 m

- 3) Convert units using given conversion factors. Show your work for full marks.

$$100 \text{ cm} = 1 \text{ m}$$

$$1000 \text{ ml} = 1 \text{ L}$$

$$3.8 \text{ L} = 1 \text{ US gallon}$$

$$2.5 \text{ cm} = 1 \text{ inch}$$

a) 10 mL = 0.01 L

$$10 \text{ mL} \times \frac{1 \text{ L}}{1000 \text{ mL}} = 0.01 \text{ L}$$

b) 2 gallons = 7.6 L

$$2 \text{ gallons} \times \frac{3.8 \text{ L}}{1 \text{ gallon}} = 7.6 \text{ L}$$

c) 10 m = 1000 cm

$$10 \text{ m} \times \frac{100 \text{ cm}}{1 \text{ m}} = 1000 \text{ cm}$$

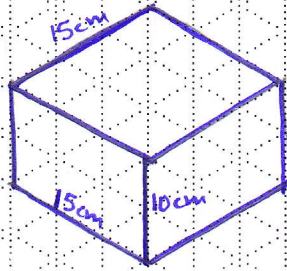
d) 20 inches = 0.5 m

$$20 \text{ in} \times \frac{2.5 \text{ cm}}{1 \text{ in}} = 50 \text{ cm}$$

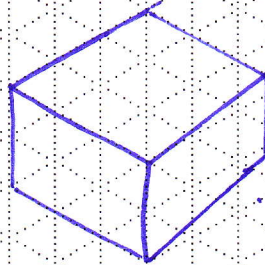
$$50 \text{ cm} \times \frac{1 \text{ m}}{100 \text{ cm}} = 0.5 \text{ m}$$

1 box = 5cm

4 a) Isometric

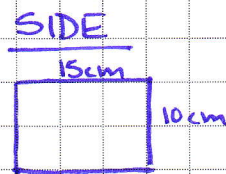
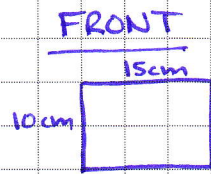
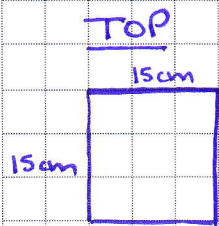


4 b) Isometric perspective

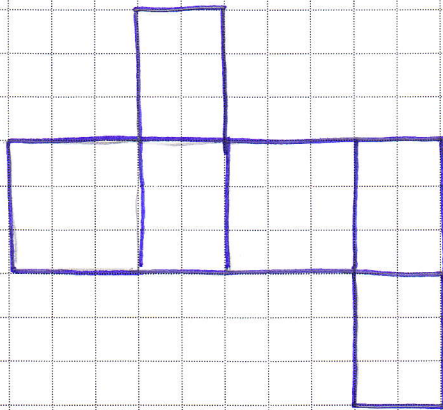


1 box = 5cm

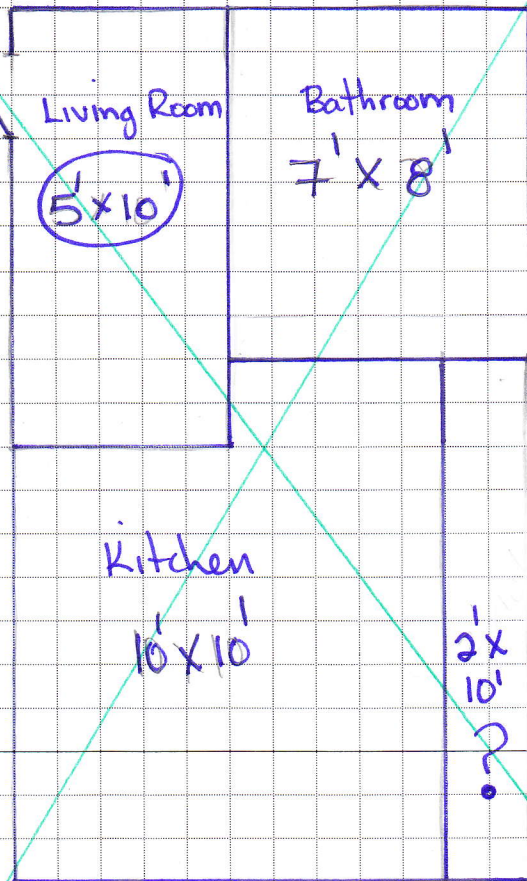
4 c) Orthographic



4 d) Net



1 box = 1 ft



Small mistake - Living

Room should be

10' x 5'

